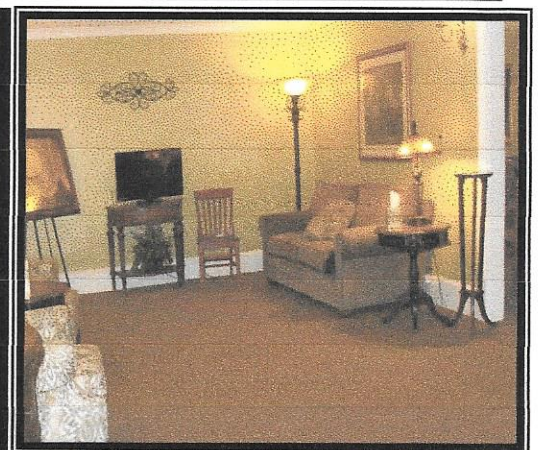
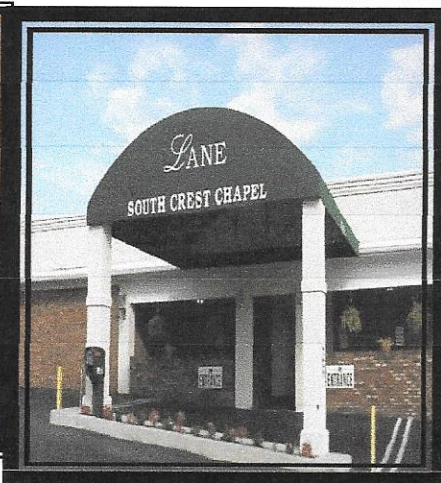


Lane Funeral Home & Crematory South Crest Chapel

Jason Cox - Manager
833 Chickamauga Avenue
Rossville, Georgia 30741
(706) 866-5151

Our Guarantee to You...

The staff of Lane Funeral Home South Crest Chapel is committed in helping you and your family create an individualized tribute to your loved one. We are available around the clock to ensure that the planned tribute is conducted in the manner of your wishes. We are available to assist in any changes that may occur in order to best serve you and your family. Our Goal is to maintain the trust and confidence you have placed in us.



General Price List

These prices are effective October 12, 2018 but are subject to change without notice.

The goods and services shown below are those we can provide to our customers. You may choose only the items you desire. However, any funeral arrangements you select will include a charge for our basic services and overhead. If legal or other requirements mean you must buy any items you did not specifically ask for, we will explain the reason in writing on the statement we provide describing the funeral goods and services you selected.

Professional Services

Basic Services of Funeral Director and Staff..... \$2,430

Our basic services charge includes but is not limited to 24-hour availability of funeral director and/or staff to respond to initial request for services, arrangement conference with family or responsible party, arrangement of service, tribute or memorialization. Staff to advise, assist and recommend appropriate personalization and individualization of the services to commemorate the unique life of your loved one. Obtaining and recording vital statistics and biographical information. Preparation and transmission of obituary notice. Death certificate preparation, filing and obtaining necessary permits, authorizations, consents and assignments. Coordination with other parties such as hospital, doctor's office and staff, cemetery, crematory, clergy, and others involved in the services and disposition. Sheltering and care of decedent. Also included in this charge are overhead expenses relative to our facilities such as professional licensing, administrative services, insurance, maintenance, building and utility expenses, taxes, legal and accounting fees, recording keeping, equipment and inventory expenses.

This fee for our basic services and overhead will be added to the total cost of the funeral arrangements you select. (This fee is already included in our charges for direct cremations, immediate burials, forwarding or receiving remains, and other packaged funeral offerings as allowed by law.)

Embalming.....\$895

Embalming is not required by law. Embalming may be necessary, however, if you select certain funeral arrangements such as a funeral with viewing. If you do not want embalming, you usually have the right to choose an arrangement that does not require you to pay for it, such as Basic cremation or immediate burial.

Other Preparation of the Deceased

- | | |
|---|-------|
| ➤ Cosmetology, Dressing and Placement of Decedent in Casket | \$345 |
| ➤ Special Restoration or Treatment of Remains (per hour) | \$100 |
| ➤ Sanitary Care of Un-Embalmed Remains | \$200 |
| ➤ Additional Procedures of Embalming following an Autopsy | \$125 |
| ➤ Refrigeration* | \$100 |

*This charge will begin on the 4th day our facilities are used to shelter the deceased

Staff Services, Facilities and Equipment

- A. Visitation at the Funeral Home or Other Facility
(per day) \$550
Our services include visitation setup, display of floral arrangements,
supervision and attendance during the visitation, viewing or wake.
- B. Funeral Service at the Funeral Home or Other Facility..... \$550
Our services include coordinating the funeral arrangement, supervision
of funeral, staff coordination of the funeral ceremony, setup and use of
facilities and equipment for the funeral ceremony.
- C. Memorial Service at Funeral Home or Other Facility..... \$350
Our services include coordinating the memorial service, supervision of
ceremony, staff coordination of the ceremony, setup and use of
facilities and equipment for the memorial service.
- D. Graveside Service..... \$375
Our services include coordinating the funeral arrangements at graveside,
supervision of the graveside service, equipment and staff necessary to
conduct the graveside service.
- E. Visitation Same Day of Service Only..... \$250
Up to 3 hours visitation on same day of service only.
Our services include visitation setup, display of floral arrangements,
supervision and attendance during the visitation, viewing or wake.

Automotive Equipment

(35 mile radius)

- A. Transfer of Deceased to Funeral Home \$345
B. Hearse or Funeral Coach \$320
C. Flower Car \$105
D. Transfer of deceased to/from Airport (Atlanta or Nashville) \$375
E. Additional mileage charges (one way) \$2.00 per mile

Merchandise

- A. Caskets available from \$ 995 to \$11,095
A complete price list will be provided at the funeral home
- B. Outer Burial Containers available from \$ 1195 to \$19,995
A complete price list will be provided at the funeral home
- C. Urns available from \$ 40 to \$ 750
- D. Urn Vaults available from \$ 185 to \$ 455
- E. Flowers available from \$ 100 to \$ 800
- F. Alternative Containers available from \$ 95 to \$ 375

Memorial Stationary Collections

Carriage One

\$245

- Register Book
- Personalized DVD
- 100 Custom and Personalized Memorial Folders
- 50 Acknowledgement Cards
- 8 Personalized Laminated Bookmarks

Simplicity Collection

\$155

- Standard White/Burgundy Register Book
- 100 Custom Memorial Folders
- 50 Acknowledgement Cards
- 4 Laminated Bookmarks

Special Packages**Forwarding Remains to Another Funeral Home**

\$2,540

This charge includes the local transfer of the decedent to our funeral home, basic services of staff, embalming, necessary authorizations, minimum shipping container and local transportation to the airport. This charge does not include the use of staff and facilities for visitation, rites and ceremonies, or any other service or merchandise not specifically listed.

Receiving Remains from Another Funeral Home

\$1,865

This charge includes temporary shelter of remains, basic services of staff, and transportation of decedent to cemetery or crematory. This charge does not include the use of staff and facilities for visitation, rites and ceremonies, or any other service or merchandise not specifically listed.

Immediate Burial

from \$10,490 to \$1,845

This charge includes local transfer of deceased to our funeral home, basic services of staff, local transportation to the cemetery, and necessary permits and authorizations. This charge does not include cemetery or government fees, the use of staff and facilities for visitation, rites and ceremonies, or any other service or merchandise not specifically listed.

- | | |
|---|---------|
| A. Immediate Burial with casket provided by purchaser | \$1,845 |
| B. Immediate Burial with minimum casket selected from our funeral home | \$2,610 |
| C. Immediate Burial with casket selected from our funeral home
(does not include cost of casket) | \$1,845 |

**Notice to any Burial Policy Holders including National Burial Policy Holders
Between 1931 – 1956:**

*** A portion of our non-declinable service charge reflects compliance cost with various laws and regulations not in effect when National Burial Insurance Company funeral policies were written between 1931 – 1956. We will charge you \$3,695 to service your policy.*

Cremation

from \$13,880 to \$2,030

This charge includes: Transfer of deceased to funeral home, basic services of staff, filing necessary permits and authorizations. This charge does not include government fees, the use of staff and facilities for visitation, rites and ceremonies, any other service or merchandise not specifically listed, or cremation permits. If you want to arrange a basic cremation you can use an alternative container.

Alternative containers encase the body and can be made of materials like fiberboard and composition materials (with or without outside covering). The Alternative containers we provide are made of corrugated composition materials.

- | | |
|---|---------|
| A. Basic Cremation with alternative container provided by purchaser | \$2,030 |
| B. Basic Cremation with alternative container from our funeral home | \$2,125 |

Cremation with Private Selections

- | | |
|---|----------------|
| A. Acknowledgement of Life | \$2,780 |
| *Basic Cremation with deceased Dressed, Cosmetized, and Placed in cremation container | |
| *Sanitation of un-embalmed remains | |
| *Refrigeration of un-embalmed remains | |
| *Transfer of deceased from place of death to the funeral home | |
| *Private family Gathering | |
| *Personalized Acknowledgement Cards | |
| *Cremation performed at Lane Funeral Home South Crest Chapel and Crematory | |
| ***** Savings of \$400.00 | |

Cremation with Public Services

- | | |
|---|----------------|
| A. Remembrance of Life | \$2,980 |
| *Professional Services | |
| *Washing/Disinfecting un-embalmed body | |
| *Memorial Service in our Chapel with full use of facilities | |
| *Life Tribute Video | |
| *Personalized Stationary Collection | |
| *Cremation Services performed at Lane Funeral Home South Crest Chapel and Crematory | |
| *Affirm Cremation Container and urn Savings of \$600.00 | |
| B. Tribute of Life | \$5,040 |
| *Professional Services | |
| *Care for your loved one with Embalming, Dressing, Cosmetizing, and Casketing | |
| *Traditional funeral in our Chapel with full use of facilities | |
| * Gathering of Family and Friends for an evening of visitation and viewing | |
| *Life Tribute Video | |
| *Personalized Stationary Collection | |
| *Cremation Services performed at Lane Funeral Home South Crest Chapel and Crematory | |
| Savings of \$400.00 | |

ADDITIONAL SERVICES, ANCILLARY ITEMS AND OTHER MERCHANDISE

- | | |
|-----------------------------------|----------------|
| A. Clothing | |
| • Ladies and Men's Garments | \$129 to \$225 |
| B. Memorial Register Books | |
| • Custom Books..... | \$55 |
| • Standard White Book | \$ 45 |

• Standard Burgundy Book.....	\$ 45
C. Prayer Cards (100).....	\$65
D. Memorial Service Folders.....	\$95
E. Thank-You Cards (Box of 25 w/ Envelopes).....	\$45
F. Flag Cases.....	\$45
G. Crucifix/Rosary Beads.....	\$20
H. Air Tray (to encase casket in air transit)...	\$175
I. Combination Unit for Forwarding of Remains to Another Funeral Home.....	\$215
J. Heavy Corrugated Cremation (Alternative) Container.....	\$95
K. Musician for Chapel Services (Piano or Organ)	\$45
L. Hairdresser.....	\$45
M. Opening and Closing of the Grave (Private Cemetery Only)	\$550
N. Grave Set up	\$325
O. Carriage-One Memorial DVD.....	\$40
P. Each additional DVD Video.....	\$25
Q. Crematory Fee.....	\$325
R. Georgia Certified Death Certificates are \$25 for the <u>FIRST</u> and \$5 each additional	
S. Tennessee Certified Death Certificate.....	\$15
T. Tennessee Cremation permits	\$25
U. Additional Laminated Bookmarkers	\$3
V. Horse Drawn Hearse (subject to availability).....	\$975
W. Dove Release.....	\$225
X. Bagpiper.....	\$250
Y. Catered Finger Foods.....	\$125
W. Dove Release.....	\$250